



**JAMES & JAMES**  
ESTATE AND LETTING AGENTS

†: 01903 958770

e: info@jamesandjamesea.co.uk

119 George V Avenue | Worthing | West Sussex | BN11 5SA

BUYING | SELLING | LETTINGS | MORTGAGE ADVICE



27 Seafeld Avenue  
Worthing, BN12 4NJ

Guide price £300,000



## 27 Seafield Avenue

Worthing, BN12 4NJ

James & James Estate Agents are delighted to bring to the market this beautifully presented two bedroom ground floor garden apartment in one of Goring's most sought after locations. Seafield Avenue is situated just a stones throw from the Goring Greensward and the seafront. Additionally the property is a short distance from numerous shops and has good access to public transport.

In brief, the accommodation comprises lounge, kitchen diner, two double bedrooms, a bath/shower room, a spacious West facing rear garden and a garage.

In our opinion internal viewing is essential to appreciate both the fantastic presentation and excellent favourable South goring position,

- Ground Floor Apartment
- Two Double Bedrooms
- West Facing Rear Garden
- Kitchen Diner
- Luxury Bathroom
- Freehold
- Garage
- Beautifully Presented





Communal Entrance

Entrance Hall

Lounge  
16'6 x 11'6 (5.03m x 3.51m)

Kitchen Diner  
17'1 x 10'3 (5.21m x 3.12m)

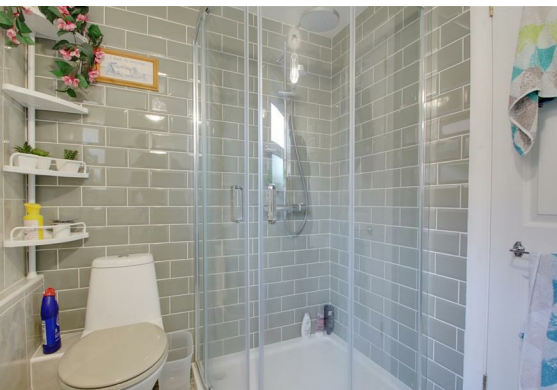
Bedroom One  
15'9 x 11'6 (4.80m x 3.51m)

Bedroom Two  
11'11 x 9'5 (3.63m x 2.87m)

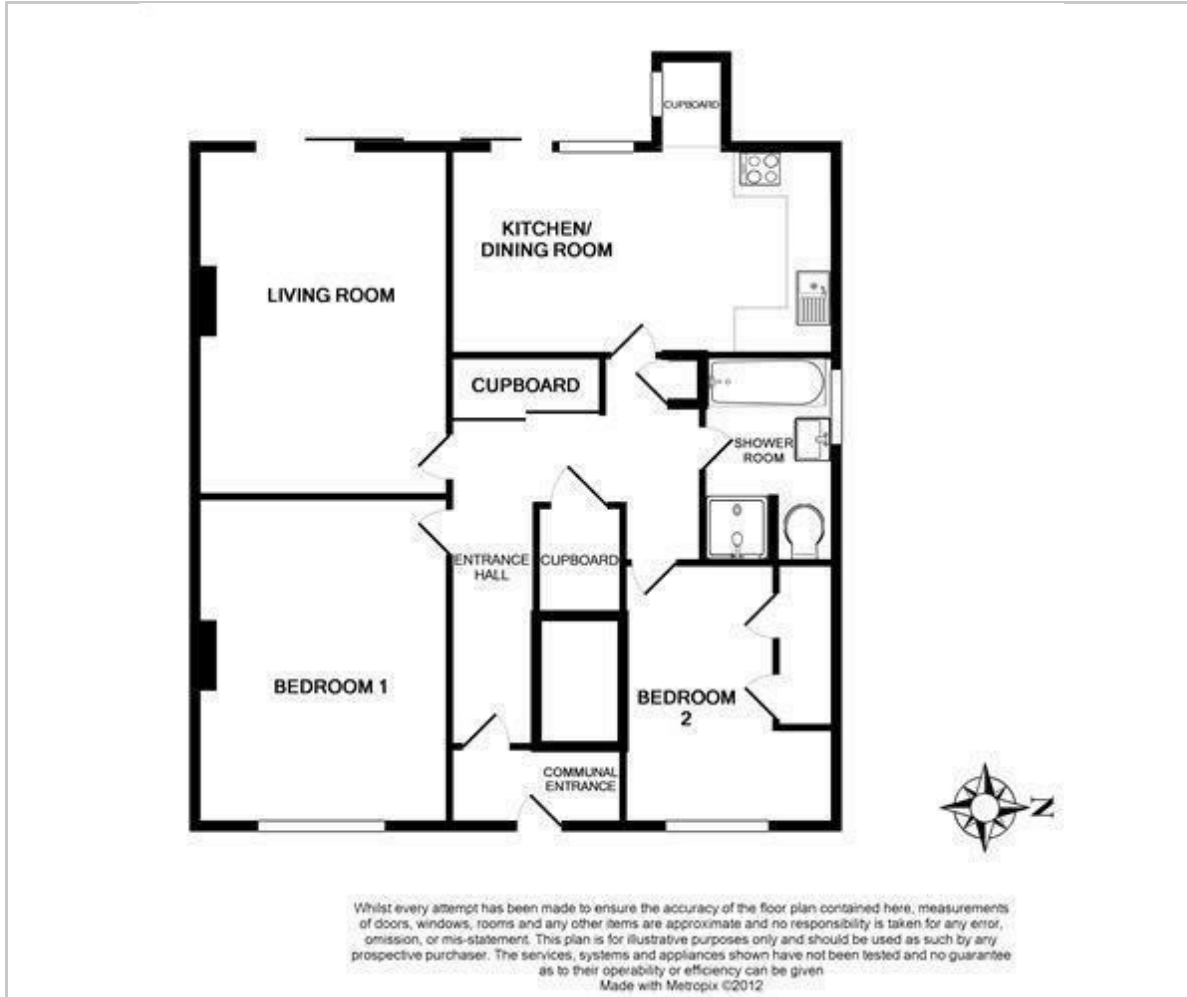
Bathroom

West Facing Rear Garden

Garage



## Floor Plan



## Viewing

Please contact our Worthing Office on 01903 958770 if you wish to arrange a viewing appointment for this property or require further information.

These particulars, whilst believed to be accurate are set out as a general outline only for guidance and do not constitute any part of an offer or contract. Intending purchasers should not rely on them as statements of representation of fact, but must satisfy themselves by inspection or otherwise as to their accuracy. No person in this firm's employment has the authority to make or give any representation or warranty in respect of the property.

## Area Map



## Energy Efficiency Graph

